

0.00



Prendre la direction du
centre-ville

0

222.07

0.00

0.20



1

221.87

0.20

0.52

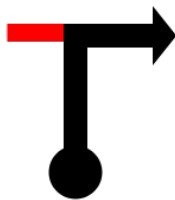


2

221.55

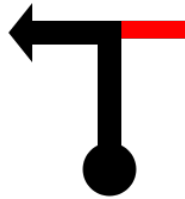
0.32

11.11



3	210.96	10.59
---	--------	-------

11.59

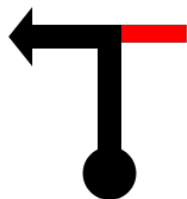


4

210.48

0.48

18.89

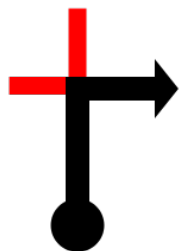


5

203.18

7.30

19.01



6

203.06

0.12

21.02

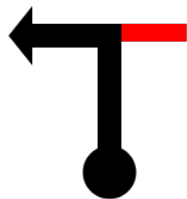


7

201.05

2.02

25.55

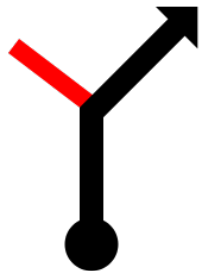


8

196.52

4.53

27.39

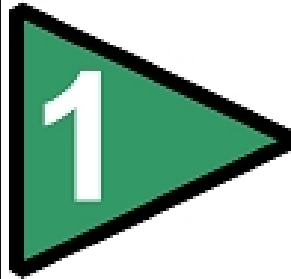


9

194.68

1.84

27.43



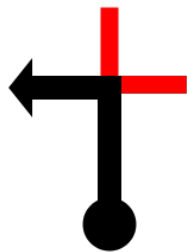
Énigme n°1
Continuez sur la D33
direction du Sud

10

194.64

0.04

29.81

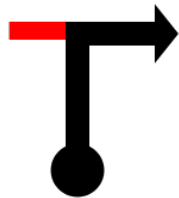


11

192.26

2.39

34.25

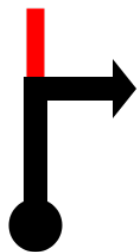


12

187.82

4.44

35.79

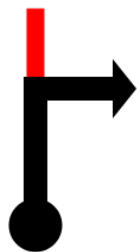


13

186.28

1.54

36.80



14

185.27

1.01

38.13



Énigme n°2

15

183.94

1.33

41.95



16

180.12

3.82

44.63

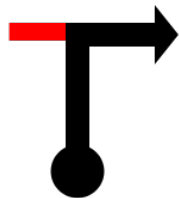


17

177.44

2.67

47.37

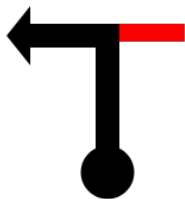


18

174.70

2.75

48.64



19

173.43

1.27

50.45



20

171.62

1.81

59.11



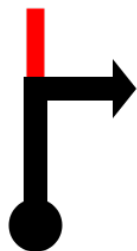
Énigme n°3

21

162.96

8.67

59.14



22

162.93

0.03

59.40



23

162.67

0.25

63.24



Vous devriez voir le
château de la Berlière sur
votre gauche.

24

158.83

3.85

65.08

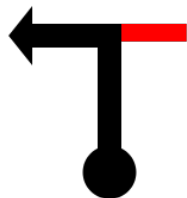


25

156.99

1.83

68.18

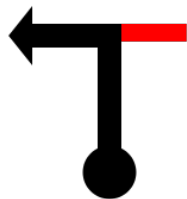


26

153.89

3.10

72.01



27

150.06

3.83

73.69

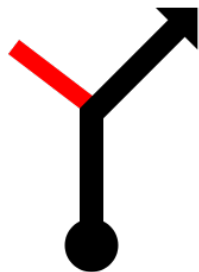


28

148.38

1.68

79.96

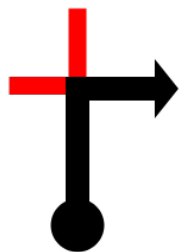


29

142.11

6.27

80.28

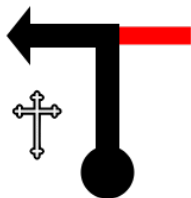


30

141.79

0.32

89.90



31

132.17

9.62

91.79



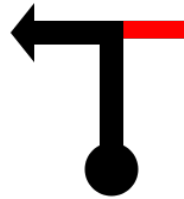
Suivre centre-ville

32

130.28

1.89

92.15

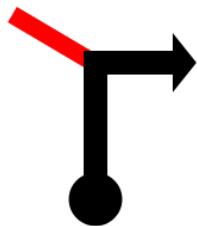


33

129.92

0.37

92.18

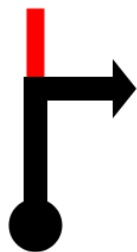


34

129.89

0.03

92.21



35

129.86

0.04

92.27



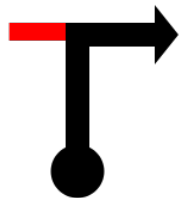
Énigme n°4

36

129.80

0.05

92.28

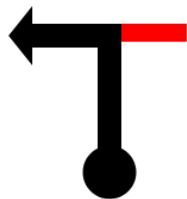


37

129.79

0.02

92.32



38

129.75

0.04

92.53

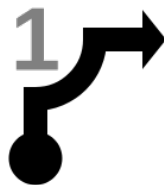


39

129.54

0.20

93.16



40

128.91

0.63

100.13

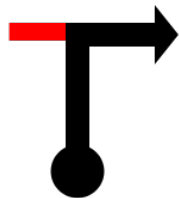


41

121.94

6.97

100.87

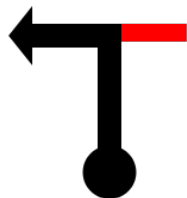


42

121.20

0.74

107.58

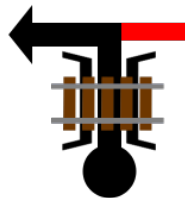


43

114.49

6.71

109.24



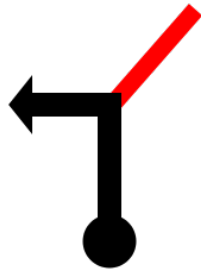
Pont de chemin de fer

44

112.83

1.66

111.44

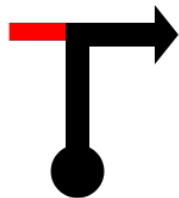


45

110.63

2.20

112.33



46

109.74

0.89

112.71



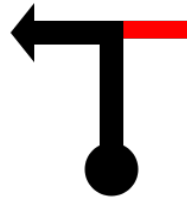
Ajustez votre tripmeter au
niveau du gîte Le
Pigeonnier

47

109.36

0.38

113.16



48

108.91

0.45

1 15.26



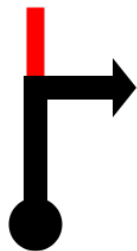
Continuez sur la RD643

49

106.81

2.10

1 16.86



50

105.21

1.60

121.15



51

100.92

4.29

121.60

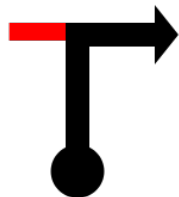


52

100.47

0.45

125.91



Vous devriez juste d'entrer
en Belgique

53

96.16

4.31

126.82



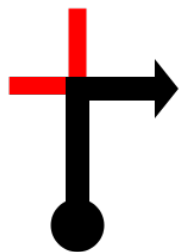
reprendre le N88 direction
Florenville

54

95.25

0.90

132.61



55

89.46

5.80

133.12



reprendre le N88 direction
Florenville

56

88.95

0.50

138.44

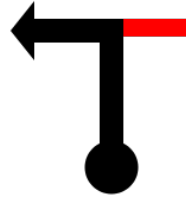


57

83.63

5.32

141.84



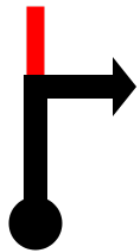
Travaux le 30 Mai ! Vérifier
avant le jour J

58

80.23

3.40

141.92

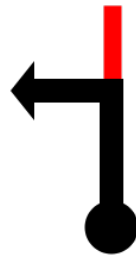


59

80.15

0.08

142.01



60

80.06

0.09

142.04



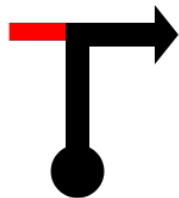
Carrefour Market en face,
prenez à droite.

61

80.03

0.03

142.42



62

79.65

0.38

143.54



63

78.53

1.12

143.90

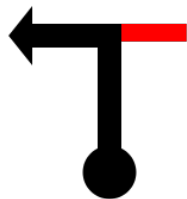


64

78.17

0.36

145.26

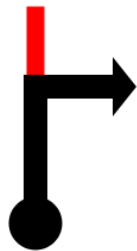


65

76.81

1.36

146.61

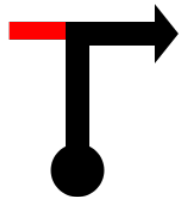


66

75.46

1.35

146.65



L'église St Martin est à
votre droite.

67

75.42

0.04

150.40



68

71.67

3.75

150.95

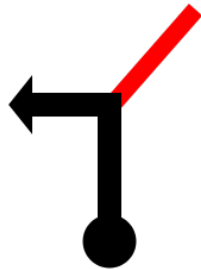


69

71.12

0.55

162.44

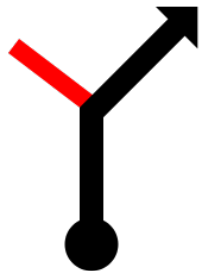


70

59.63

11.48

171.85



71

50.22

9.41

174.35

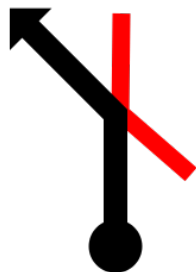


72

47.72

2.50

177.90

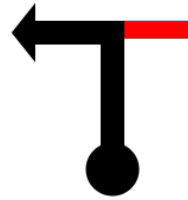


73

44.17

3.55

179.15

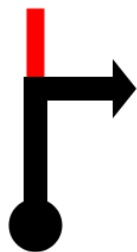


74

42.92

1.25

179.40

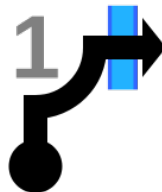


75

42.67

0.25

182.58

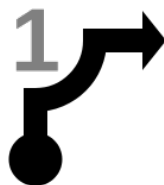


76

39.49

3.18

182.65



77

39.42

0.07

182.99



78

39.08

0.34

183.50



79

38.57

0.51

183.83

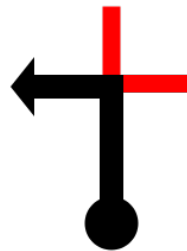


80

38.24

0.33

195.82



Vous êtes revenu en
France ?

81

26.25

11.98

202.61

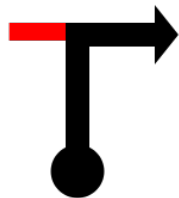


82

19.46

6.80

203.34



83

18.73

0.72

207.85



84

14.22

4.51

211.49



85

10.58

3.64

214.04

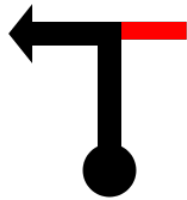


86

8.03

2.56

215.68



87

6.39

1.64

215.75



88

6.32

0.07

219.75



89

2.32

4.00

221.03



90

1.04

1.27

221.57



91

0.50

0.54

222.07



92

-0.00

0.50

